

# VAC-500<sup>®</sup>

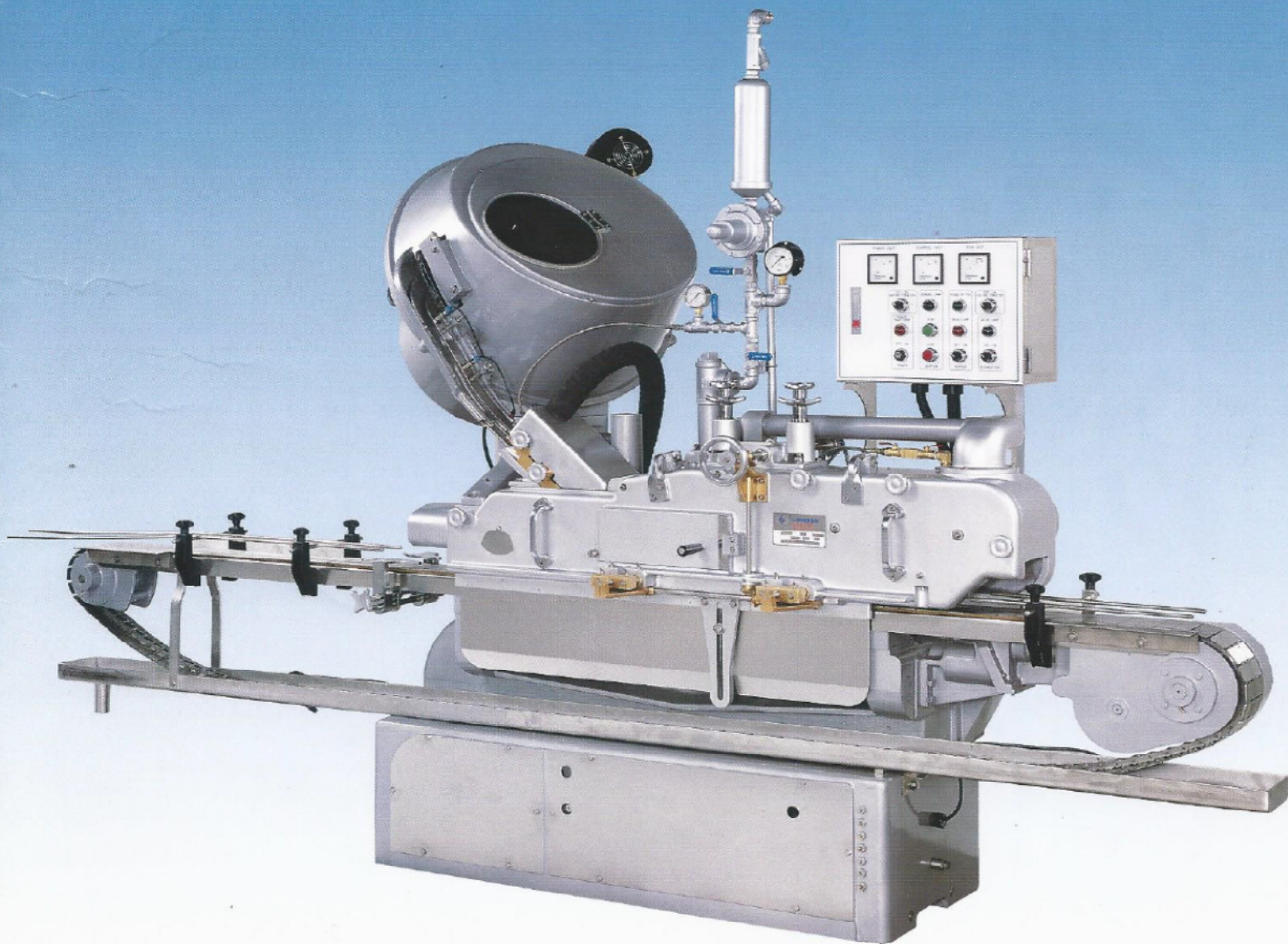
LONGGROW



Vacuum Capping Machines  
WITH  
MACHINE-MOUNTED CAP HOPPER

MACHINERY

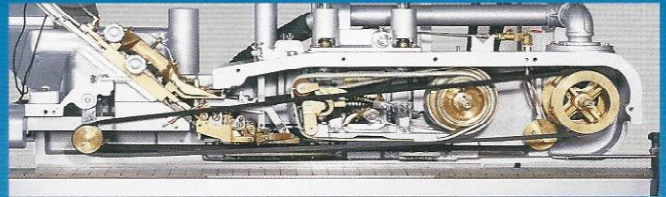
The VAC-500 Vacuum Capping Machines are ideal for operations where *low cost, efficient, automatic vacuum capping of Twist-off, PT, Presson, and all other types of vacuum closures* is desired.



# Capper Head

## The Structure

Of a Front Door and a Back House. Both are single-mold castings of **hardened aluminum alloy**. Structure of extraordinary rigidity.



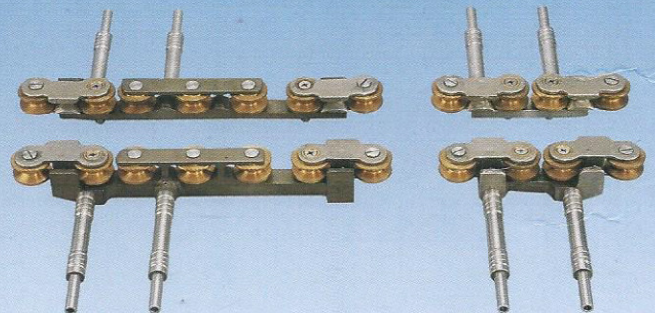
· Internal View of Capper Head with door open ·



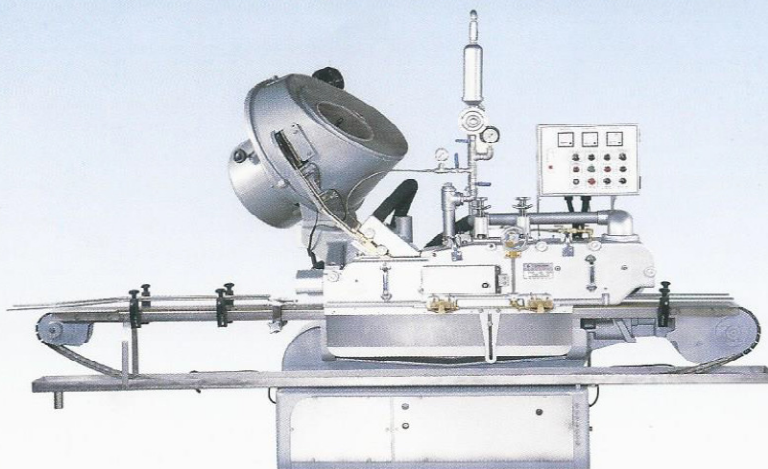
· Rear View of Capper ·

## The Width Adjustment

Inside the capper head, each of the two transverse sides is mounted with a set of roller bracket. These **two roller brackets** are parallel and opposite with each other and are linked to a width adjustment device to allow them **to be moved inward or outward simultaneously or individually**, thereby the width between them can be adjusted so as to enable to run glass of various diameters between the roller brackets where two side belts are to be driven, one on each, to clamp the glass firmly by tight width adjustment and so to move the glass in line with the center of the cap track of the machine in such a way to carry the glass keeping pace with the running conveyor through the capper head during operation.



· Side Belt Roller Bracket Assemblies ·



· Front View of Capper ·

## The Height Adjustment

The capper head is fastened on two parallel vertical posts which are anchored at the machine base. The posts are linked to a height adjustment device, thereby **the capper head can be moved up and down**. This is the adjustment to suit various heights of the glass.

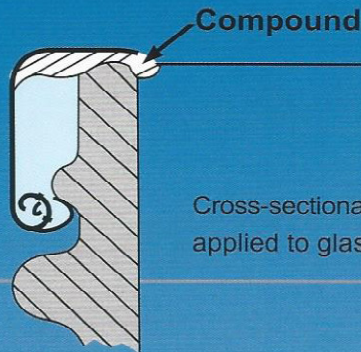
## A Steam Vacuum Chamber

With the steam system and a steam distributor built in, the capper head is capable of injecting the steam to efficiently replace the air in the head space of the glass. As a result, **very high product vacuum is created** after capping. The **3-direction waste-steam exhaustion system** of VAC-500 capper also plays a big part in ensuring the high vacuum efficiency.

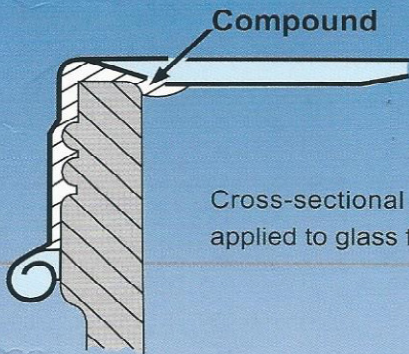
# Cap Types To Run



**Twist-Off**  
**Twist-Off Button**



Cross-sectional view of **Twist-Off** closure applied to glass finish .



Cross-sectional view of **PT** closure applied to glass finish .



**Press-on Twist-off (PT)**

Glass finish of either multiple threads or single continuous thread .

## Interchangeability

The capping parts are different but interchangeable in operation between **Twist-Off** caps and **PT** caps . These capping parts are so called **Change Parts** . Herewith the pictures are showing some change parts for Twist capping .

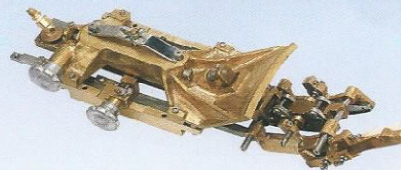
Cover Assembly (Hopper)



Lower Cap Chute Assembly



Cap Chute & Track Assembly



Drag Arm Assembly



Duck Bill & Hold Down Assembly



Sealing Shoe Assembly



Step Sealing Pulley Assembly



Sealing Belt

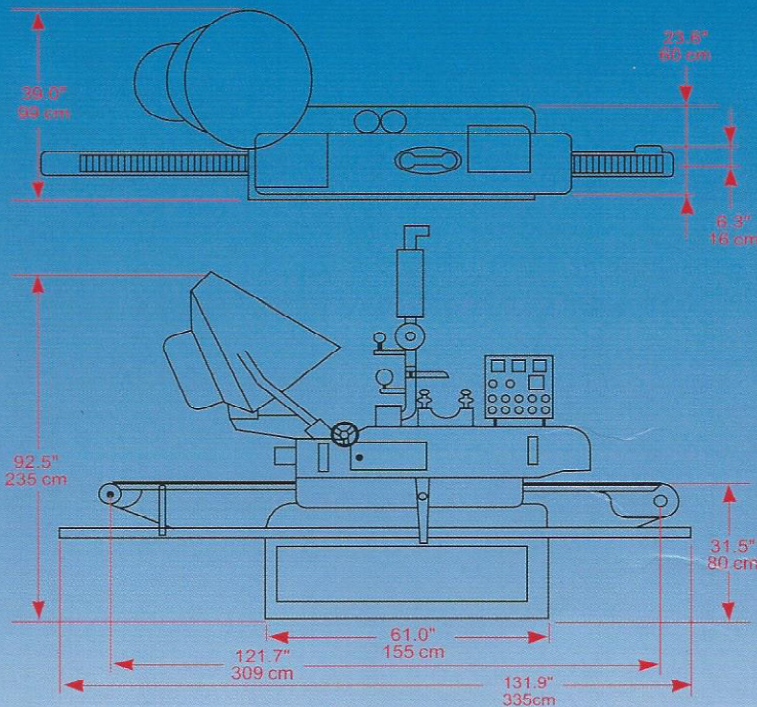
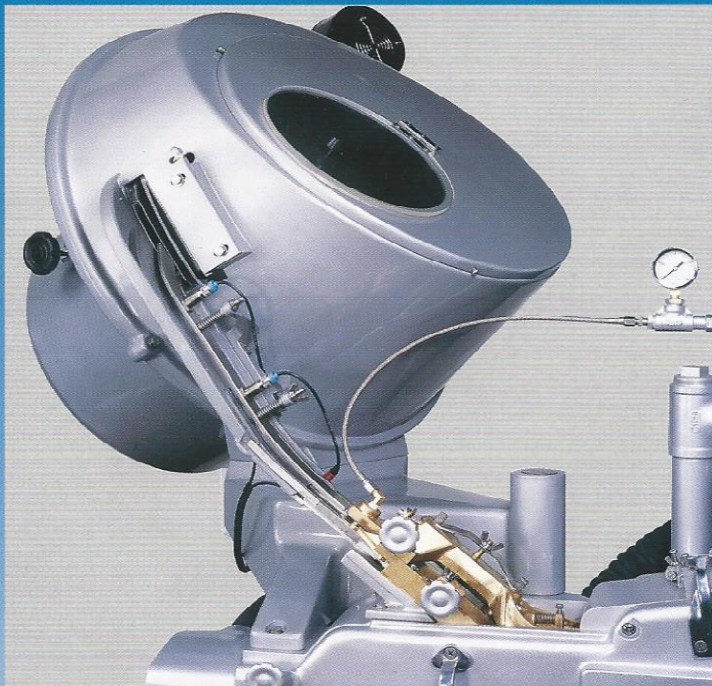


# VAC-500<sup>®</sup>

LONGROW



MACHINERY



## Cap Hopper

- ★ With **3-Way Cap-Level-in-Chute Controls**, to say Full/Mid/Low/ level controls. The Low level control is for being linked to the preceding equipemnt for stop/start.
- ★ Optional remote cap feeding conveyor control .
- ★ Variable speed adjustment (with or without inverter) .

### DIMENSIONS

- Overall Height : 235 cm ( 92.5")
- Floor Space : 335 x 60 cm (131.9"x 23.6")
- Net Weight : 1300 kgs ( 2860 lbs)
- Gross Weight : 1600 kgs ( 3520 lbs )

### SPECIFICATIONS

- Jar Diameter : 50 ~ 110 mm ( 2"~ 4.3")
- Jar Height : 55 ~ 300 mm ( 2.2"~ 11.8")
- **Optional Small Jar** : Dia. 35 mm x Ht. 35 mm.
- Speed : Standard Model runs up to 300 caps/min.  
**High Performance Model up to 500 caps/min.**
- **Note** : Speed varies depending on cap type / size .
- Closure Type : Twist-Off (RTO, MTO, DTO), PT, Presson.
- Closure Size : 27 mm ~ 89 mm .
- Steam Consumption : 30 ~ 75 kgs/hr ( 66 ~ 165 lbs/hr )
- Steam Supply : 5.0 ~ 7.0 kgs/cm<sup>2</sup> ( 71 ~ 99 psi)
- Motor Power : 2 hp , 1 hp , 1/2 hp .

### FEATURES

- Specially designed Steam Vacuum System, producing **very high vacuum** up to 660mm-Hg(26 inch-Hg).
- **3-direction Exhaustion System**, exhausting waste steam from the Entrance of head , from the Top of the cap chute and from the Discharge End of head .
- **Minimum Change Parts Required** among different cap types and sizes. So quick change over, benefiting operation with Excellent Economy and Flexibility.
- All parts made of **Choice Anti-corrosive materials** of Stainless Steel; Copper Alloy; Aluminum Alloy...etc..
- **Trouble-free Drive Systems**, guaranteed reliability.
- **Variable Speed Drive** (with or without inverter) .
- Easy to operate . Effortless to clean and maintain.
- **Optional High Performance Model** .
- **Optional Super Heated Steam System** (Mayonnaise).
- **Optional Bottle Finish Washer** ( Ketsup ) .
- Wholly finished with **heat-resistant silver paint coat** .
- Made in Taiwan, of **Superior Workmanship and Excellent Durability** .

Remark :

Features and Specifications are subject to change without prior notice .



**LONGROW MACHINERY PRODUCTS CO., LTD**

No. 204 , Da-Tsang St., Taichung 403 Taiwan .

Phone : 886-4- 24720207 (Mobile : 886-921389256)

Fax : 886-4-24728395

E-mail : aldong@ms43.hinet.net

copy rights reserved 20059406300